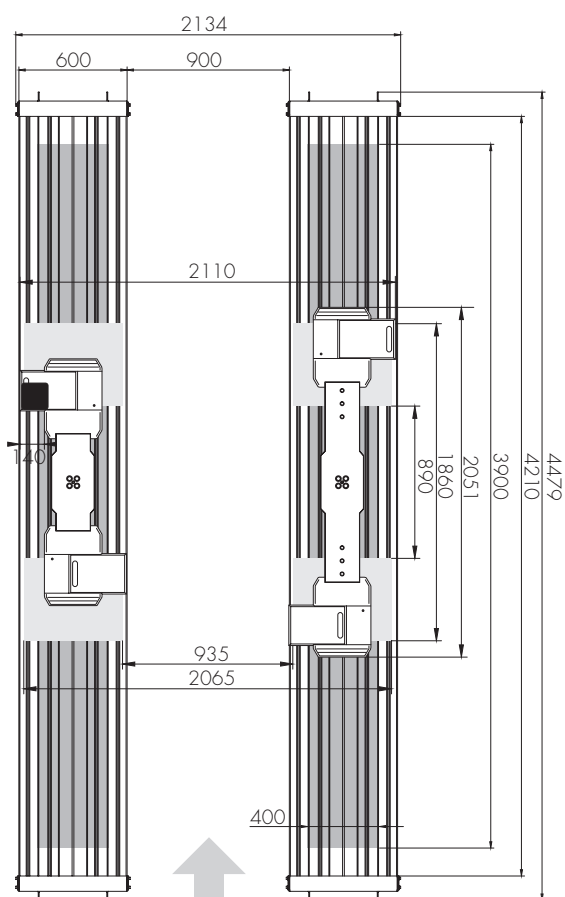
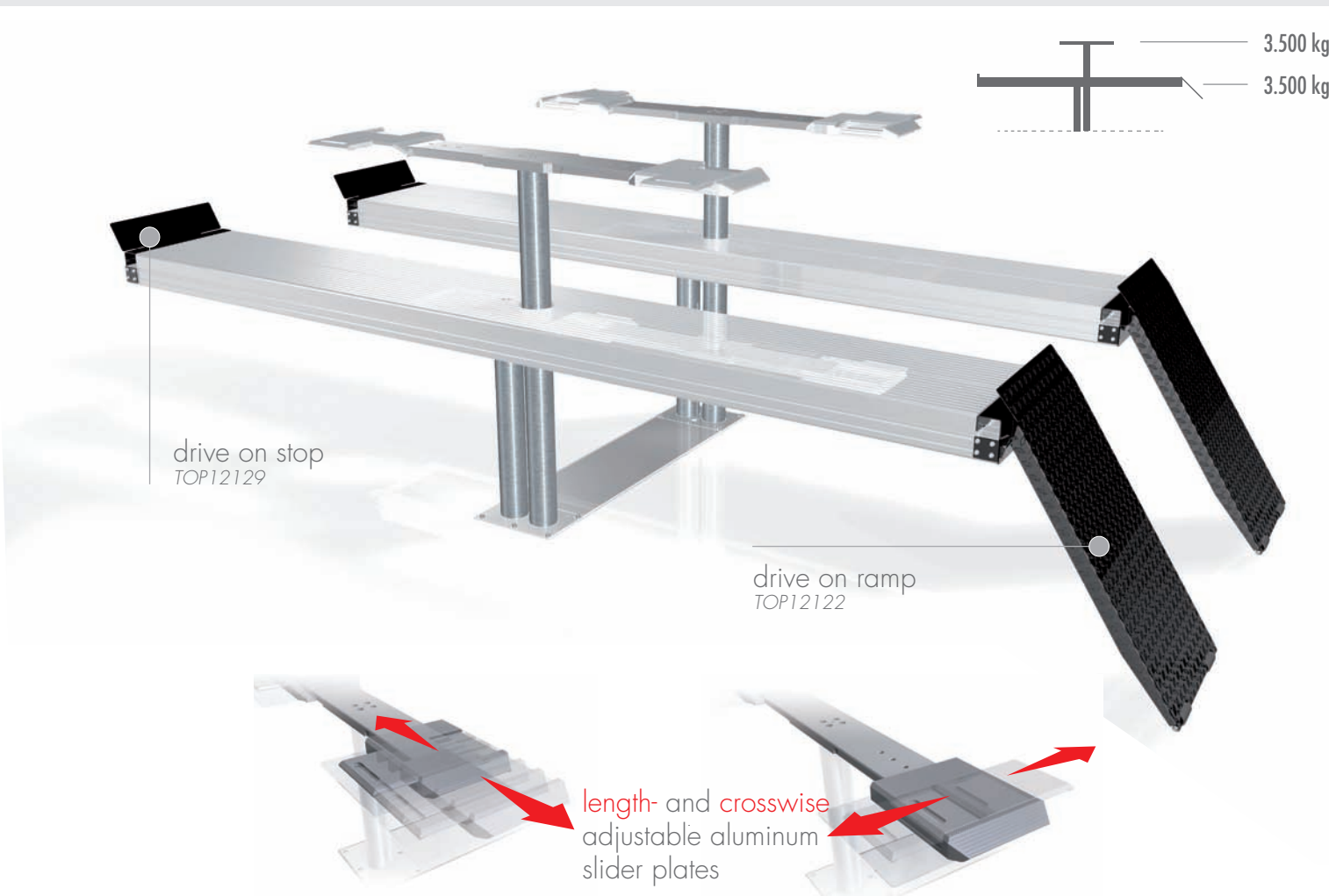


ALU TRACK LIFT

2.35 DUPLO UNI PLUS



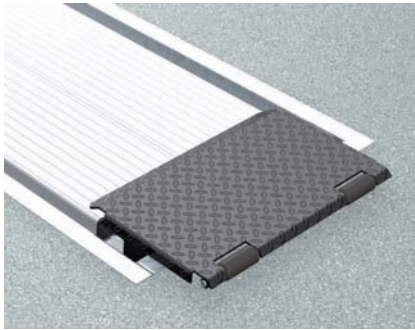
TECHNICAL DATA

load capacity	3500 kg
wheel free lift	3500 kg
lifting height	1860 mm
lifting height wheel free unit	2045 mm
platform length	4400 mm
platform height	175 mm
cross over height wheel free unit	60 mm
piston diameter	123 mm
piston distance	1500 mm
installation depth	2443 mm
motor output	3,0 kW
power connector	400 V/16 A
cable length to control	8 m
lifting time	40 sec.
lowering time	40 sec.

pre-assembled with cassette	TOP10036
cassette	TOP11036
without cassette (delivery in wooden case)	TOP10136
basic unit (incl. cassette without support)	TOP20117
support platform	TOP20903
support wheel free unit	TOP20873

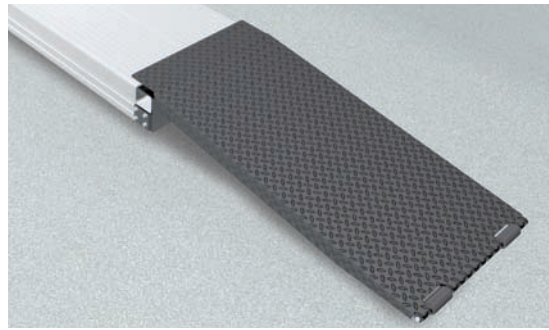
ACCESSORIES

PLATFORM ALU TRACK



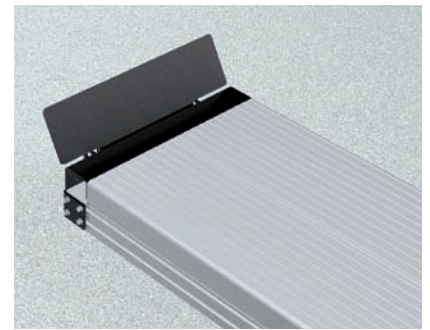
drive on ramp

for installation flush with floor level
TOP12121



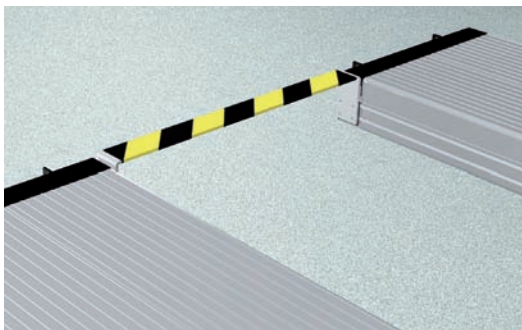
drive on ramp

for floor incumbent installation
1250 mm, hanging, bevel 7°
TOP12122



drive on stop

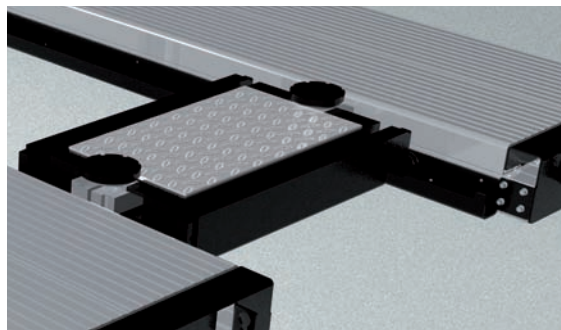
TOP12129



roll bar

for install. flush with floor level
TOP12138

floor incumbent installation
TOP12106



axle lifter

2000 kg, pneumatic, incl. slide rails
TOP12149

2500 kg, pneumatic, incl. slide rails
TOP12150



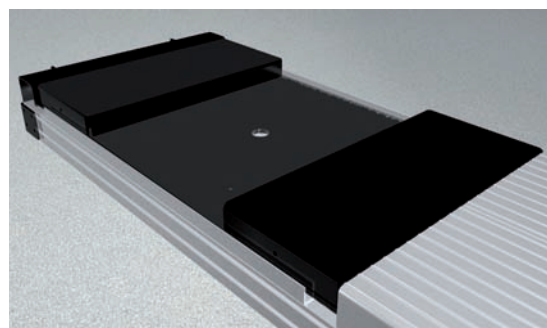
slide rail set

incl. fastening material
TOP12151



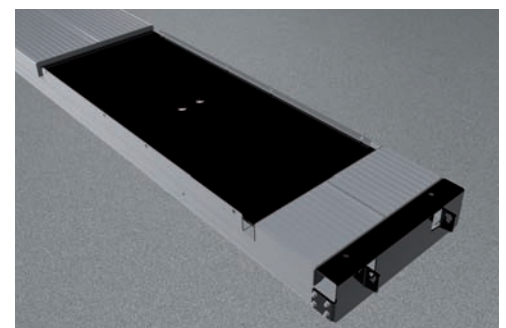
wheel alignment support

1350 mm 600 mm
TOP12152 TOP12153



platform notches for turn table

incl. levelling plates and compensating pieces,
notches height adjustable
TOP12191

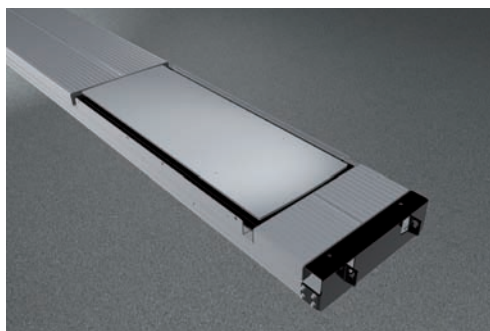


platform notches for sliding plate

TOP12192

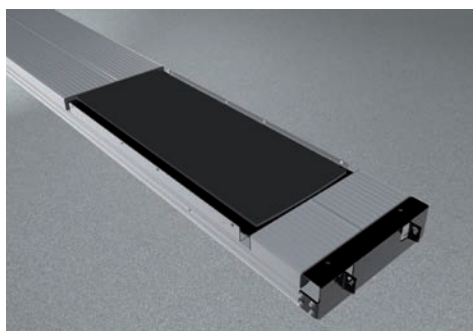
ACCESSORIES

PLATFORM ALU TRACK



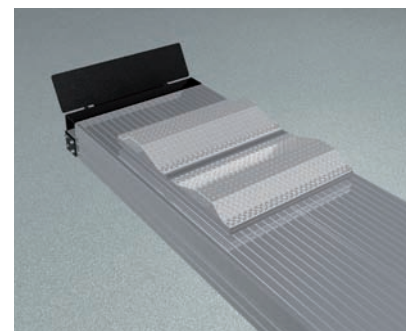
sliding plate
standard

TOP12196



sliding plate
precision

TOP12193



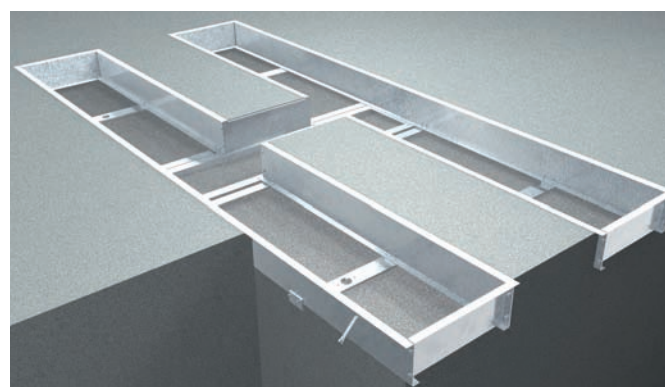
joint play tester

incl. remote control
TOP12136V2



illumination set LED

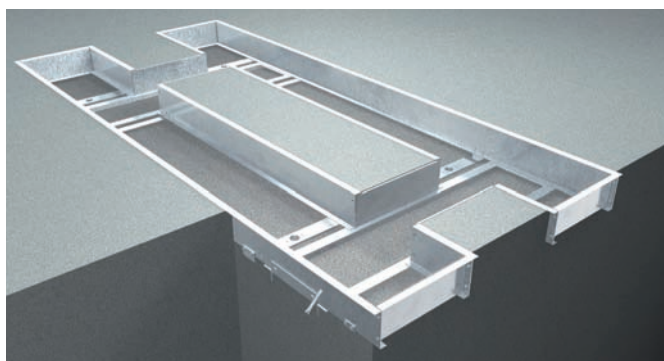
Alu Track
TOP12167



surround frame

4400 mm galvanized, for install. flush with floor level
TOP12139

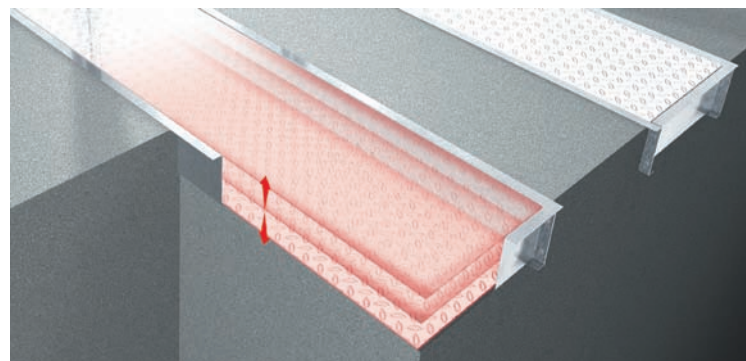
4800 mm galvanized, for install. flush with floor level
TOP12140



surround frame

4800 mm galvanized, for install. flush with floor level
TOP12160

5500 mm galvanized, for install. flush with floor level
TOP12161

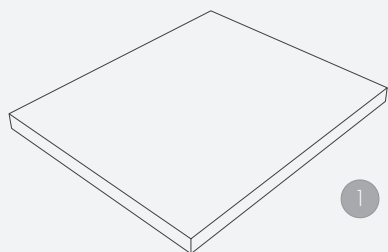


automatic floor levelling system

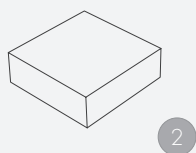
2-pi. 4400 mm 2-pi. DUPLO 4400 mm 4-pi. 4800 mm
TOP12143 TOP12141 TOP12162

2-pi. 4800 mm 2-pi. DUPLO 4800 mm 4-pi. 5500 mm
TOP12199 TOP12142 TOP12163

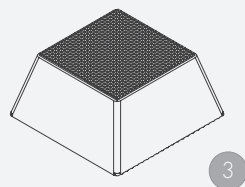
ACCESSORIES



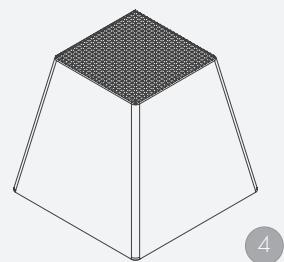
1 rubber pad
290 x 335 x 20 mm
TOP11007 (1set / 4 pcs.)



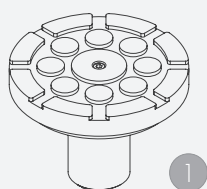
2 rubber pad
120 x 120 x 40 mm
TOP11006 (1set / 4 pcs.)



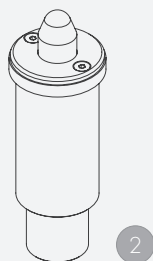
3 rubber pad pyramid
70 mm
TOP11005 (1set / 4 pcs.)



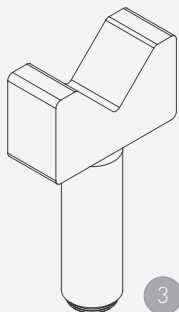
4 rubber pad pyramid
140 mm
TOP11035 (1set / 4 pcs.)



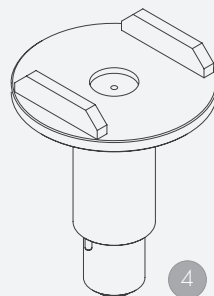
1 stacking adapter
d130 x d 45 / 25-55 mm
TOP11021 (1set / 4 pcs.)



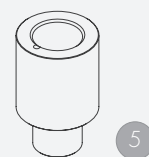
2 stacking adapter NCV3
d 45 x d 70 / 125-250 mm
TOP11031 (1set / 2 pcs.)



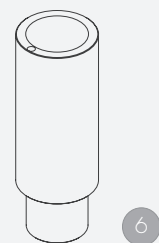
3 stacking adapter prism
d 45 / 182-312 mm
TOP11026 (1set / 2 pcs.)



4 stacking adapter U-form
d 130 x d 45 / 193-295 mm
TOP11025 (1set / 4 pcs.)



5 stacking adapter extension
80 mm
TOP11020 (1set / 4 pcs.)



6 stacking adapter extension
130 mm
TOP11023 (1set / 4 pcs.)

Herrmann AG

Bahnhofstrasse 32

D-93483 Pöding

Sales

Phone: +49 (0)9461/91388 50

Fax: +49 (0)9461/91388 55

E-Mail: sales@herrmann.de

Service

Phone: +49 (0)9461/91388 30

Fax: +49 (0)9461/91388 33

E-Mail: service@herrmann.de

www.herrmann.de