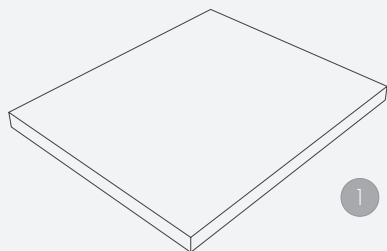


TECHNICAL DATA

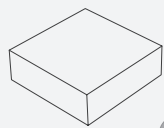
load capacity	3500 kg
lifting height	1860 mm
effective raise height	1920 mm
cross over height	60 mm
piston diameter	123 mm
piston distance	1335 mm
installation depth	2338 mm
motor output	3,0 kW
power connector	400 V/16 A
cable length to control	8 m
lifting time	40 sec.
lowering time	40 sec.

pre-assembled with cassette	TOP10006
cassette	TOP11000
without cassette (delivery in wooden case)	TOP10106
basic unit (incl. cassette without support)	TOP20110
support	TOP20873

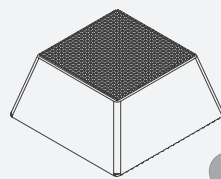
ACCESSORIES



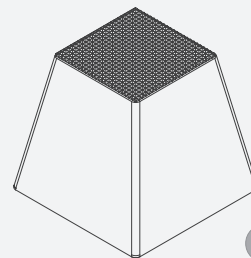
1



2



3



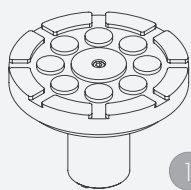
4

- 1 | rubber pad
290 x 335 x 20 mm
TOP11007 (1set / 4 pcs.)

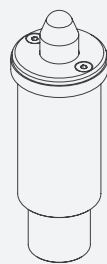
- 2 | rubber pad
120 x 120 x 40 mm
TOP11006 (1set / 4 pcs.)

- 3 | rubber pad pyramid
70 mm
TOP11005 (1set / 4 pcs.)

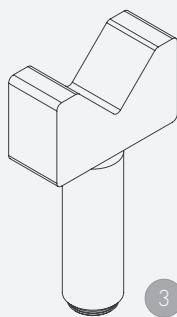
- 4 | rubber pad pyramid
140 mm
TOP11035 (1set / 4 pcs.)



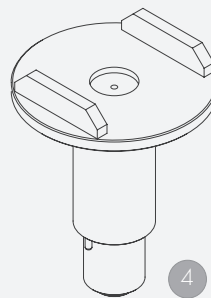
1



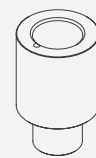
2



3



4



5



6

- 1 | stacking adapter
d130 x d 45 / 25-55 mm
TOP11021 (1set / 4 pcs.)

- 2 | stacking adapter NCV3
d 45 x d 70 / 125-250 mm
TOP11031 (1set / 2 pcs.)

- 3 | stacking adapter prism
d 45 / 182-312 mm
TOP11026 (1set / 2 pcs.)

- 4 | stacking adapter U-form
d 130 x d 45 / 193-295 mm
TOP11025 (1set / 4 pcs.)

- 5 | stacking adapter extension
80 mm
TOP11020 (1set / 4 pcs.)

- 6 | stacking adapter extension
130 mm
TOP11023 (1set / 4 pcs.)

**Herrmann AG**

Bahnhofstrasse 32

D-93483 Pöding

Sales

Phone: +49 (0)9461/91388 50

Fax: +49 (0)9461/91388 55

E-Mail: sales@herrmann.de

Service

Phone: +49 (0)9461/91388 30

Fax: +49 (0)9461/91388 33

E-Mail: service@herrmann.de

www.herrmann.de

we lift cars