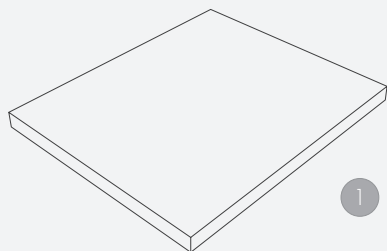


## TECHNICAL DATA

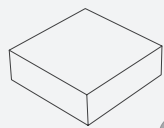
load capacity	3500 kg
lifting height	1860 mm
effective raise height	1920 mm
cross over height	60 mm
piston diameter	123 mm
piston distance	1335 mm
installation depth	2338 mm
motor output	3,0 kW
power connector	400 V/16 A
cable length to control	8 m
lifting time	40 sec.
lowering time	40 sec.

pre-assembled with cassette	TOP10025
cassette	TOP11000
without cassette (delivery in wooden case)	TOP10125
basic unit (incl. cassette without support)	TOP20110
support	TOP20874

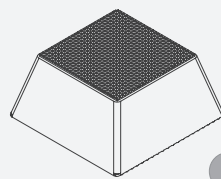
# ACCESSORIES



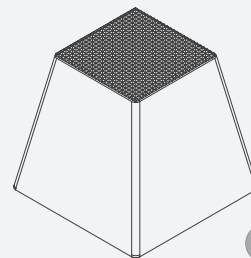
1



2



3



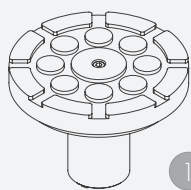
4

- 1 | rubber pad  
290 x 335 x 20 mm  
TOP11007 (1set / 4 pcs.)

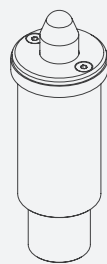
- 2 | rubber pad  
120 x 120 x 40 mm  
TOP11006 (1set / 4 pcs.)

- 3 | rubber pad pyramid  
70 mm  
TOP11005 (1set / 4 pcs.)

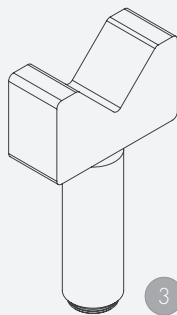
- 4 | rubber pad pyramid  
140 mm  
TOP11035 (1set / 4 pcs.)



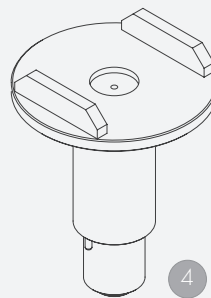
1



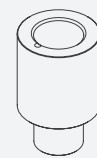
2



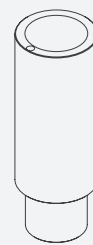
3



4



5



6

- 1 | stacking adapter  
d130 x d 45 / 25-55 mm  
TOP11021 (1set / 4 pcs.)

- 2 | stacking adapter NCV3  
d 45 x d 70 / 125-250 mm  
TOP11031 (1set / 2 pcs.)

- 3 | stacking adapter prism  
d 45 / 182-312 mm  
TOP11026 (1set / 2 pcs.)

- 4 | stacking adapter U-form  
d 130 x d 45 / 193-295 mm  
TOP11025 (1set / 4 pcs.)

- 5 | stacking adapter extension  
80 mm  
TOP11020 (1set / 4 pcs.)

- 6 | stacking adapter extension  
130 mm  
TOP11023 (1set / 4 pcs.)

**Herrmann AG**

Bahnhofstrasse 32

D-93483 Pöding

**Sales**

Phone: +49 (0)9461/91388 50

Fax: +49 (0)9461/91388 55

E-Mail: [sales@herrmann.de](mailto:sales@herrmann.de)

**Service**

Phone: +49 (0)9461/91388 30

Fax: +49 (0)9461/91388 33

E-Mail: [service@herrmann.de](mailto:service@herrmann.de)

[www.herrmann.de](http://www.herrmann.de)

we lift cars